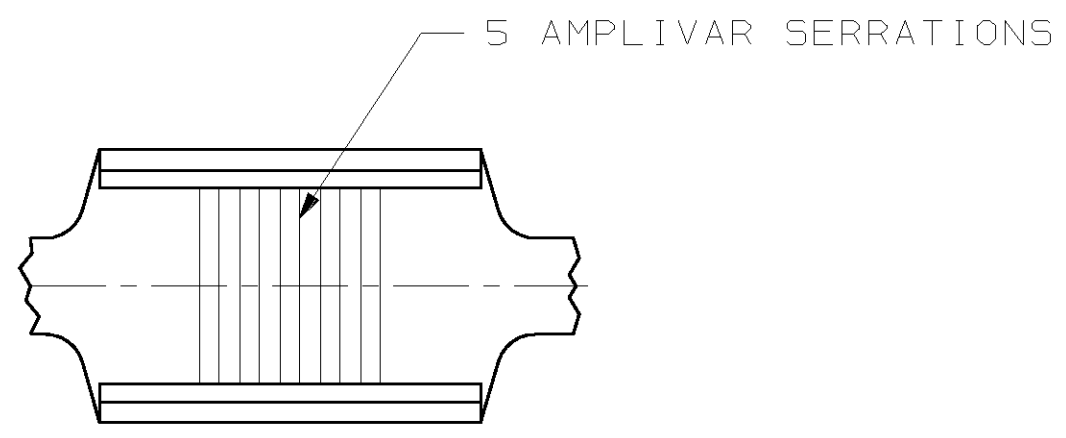
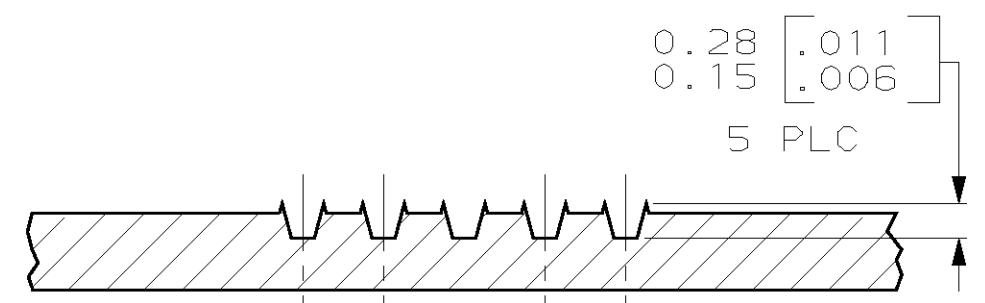
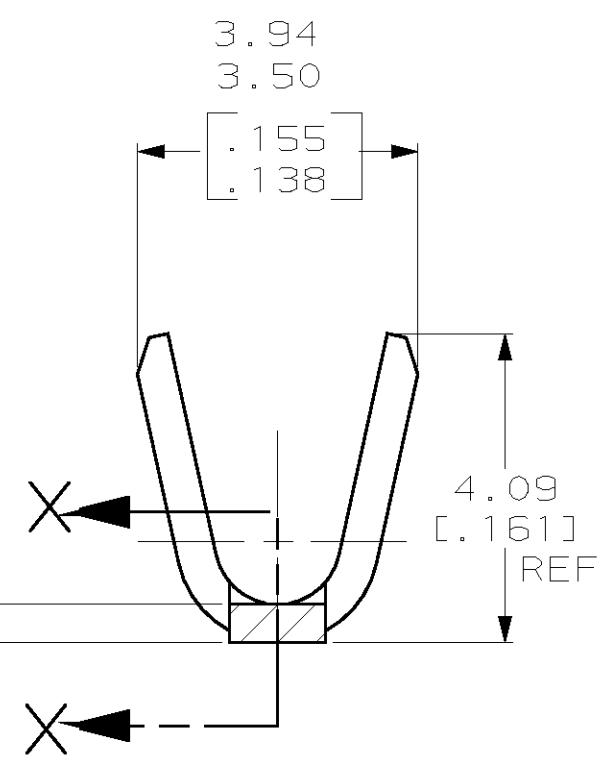
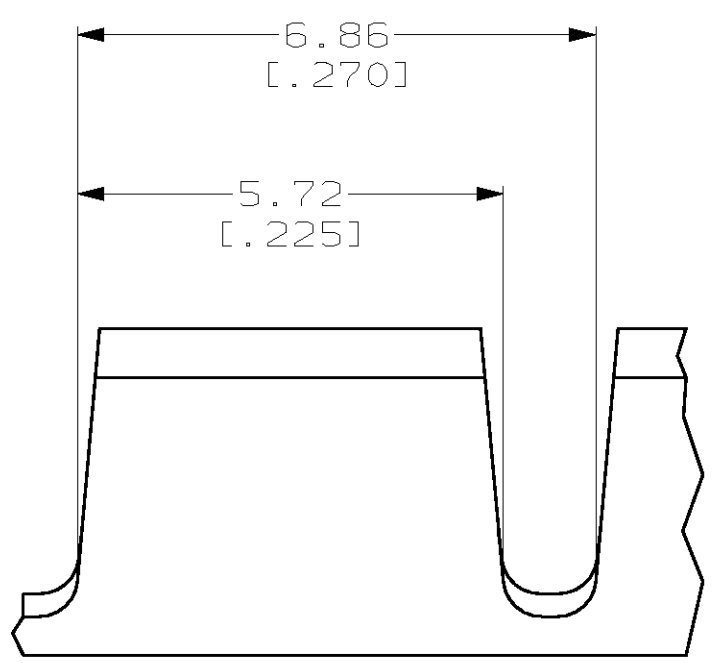


THIS DRAWING IS UNPUBLISHED. RELEASED FOR PUBLICATION ,19 .
 © COPYRIGHT 19 BY AMP INCORPORATED. ALL RIGHTS RESERVED.

| LOC | | DIST | | REVISIONS | | | |
|-----|-----|-------------|--------------------------|-----------|------|----|--|
| P | LTR | DESCRIPTION | DATE | DWN | APVD | | |
| AF | 50 | C | REVISED PER 0G3A-0280-02 | 03JUN02 | MF | GP | |



- 1 CONTINUOUS STRIP ON REELS.
 - 2 WIRE SIZE IS 1500-5000 CMA $\triangle 3$
- $\triangle 3$ CRIMP WIDTH: .110 F TYPE (AMPLIVAR THRU)
 CRIMP HEIGHT ($\pm .002$) = (TOTAL CMA + 10,700) / 193,400
 GENERAL APPLICATION GUIDELINES MUST BE FOLLOWED AS SPECIFIED IN CATALOG #82221
 FOR APPLICATOR INFORMATION CALL: 1-800-722-1111
 FOR PRODUCT INFORMATION CALL: 1-800-522-6752



SECTION A-A
 SCALE 20:1

0.51 \pm 0.025
 [.020 \pm .001]

41899
 PART NO.

| | | | | |
|---|--|--|---|--------------------|
| THIS DRAWING IS A CONTROLLED DOCUMENT. | | DWN JR RUTH 08SEP00 | AMP Incorporated Harrisburg, PA 17105-3608 | |
| DIMENSIONS: MM [INCHES] | | CHK MS FEHER 08SEP00 | | |
| TOLERANCES UNLESS OTHERWISE SPECIFIED: | | APVD G PORTA 08SEP00 | NAME SPLICE, AMPLIVAR | |
| 0 PLC \pm - 1 PLC \pm - 2 PLC \pm 0.38 [.015] 3 PLC \pm - 4 PLC \pm - ANGLES \pm - | | PRODUCT SPEC - | DRAWING NO 114-2009 | |
| MATERIAL 082 BRASS | | FINISH 0.00254 [.000100] MIN TIN | APPLICATION SPEC 114-2009 | RESTRICTED TO - |
| | | WEIGHT - | SIZE A3 | CAGE CODE 00779 |
| | | CUSTOMER DRAWING | SCALE 10:1 | SHEET 1 OF 1 |
| | | | DRAWING NO C- 41899 | REV C |